



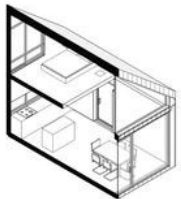
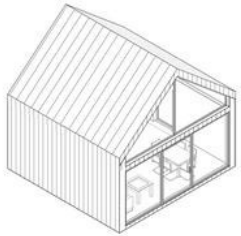
Single-family
houses



Basic variants

Discover unique technological solutions that make our modular homes *synonymous* with modernity, quality, and durability. Check out the detailed technical parameters and discover how precision craftsmanship combines with functionality at the highest level.

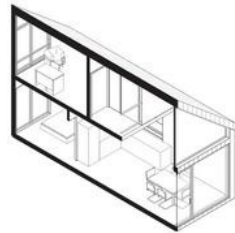
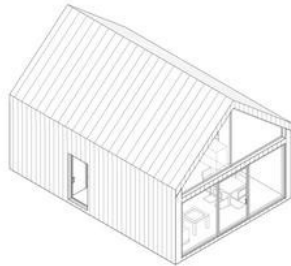
2 segments



Building area 40m²
Floor area MIN 44m² Floor area
MAX 60m²

from EUR 63.200 net

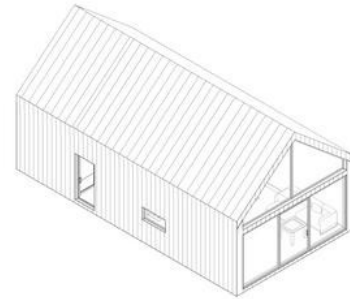
3 segments



Built-up area 60m²
Floor space MIN 78m² Floor
space MAX 95m²

from EUR 95.000 net

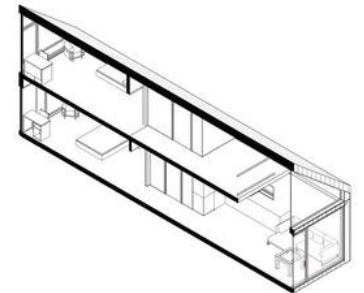
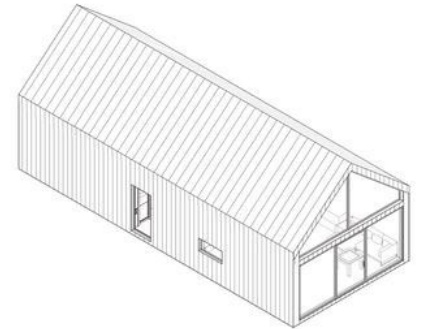
4 segments



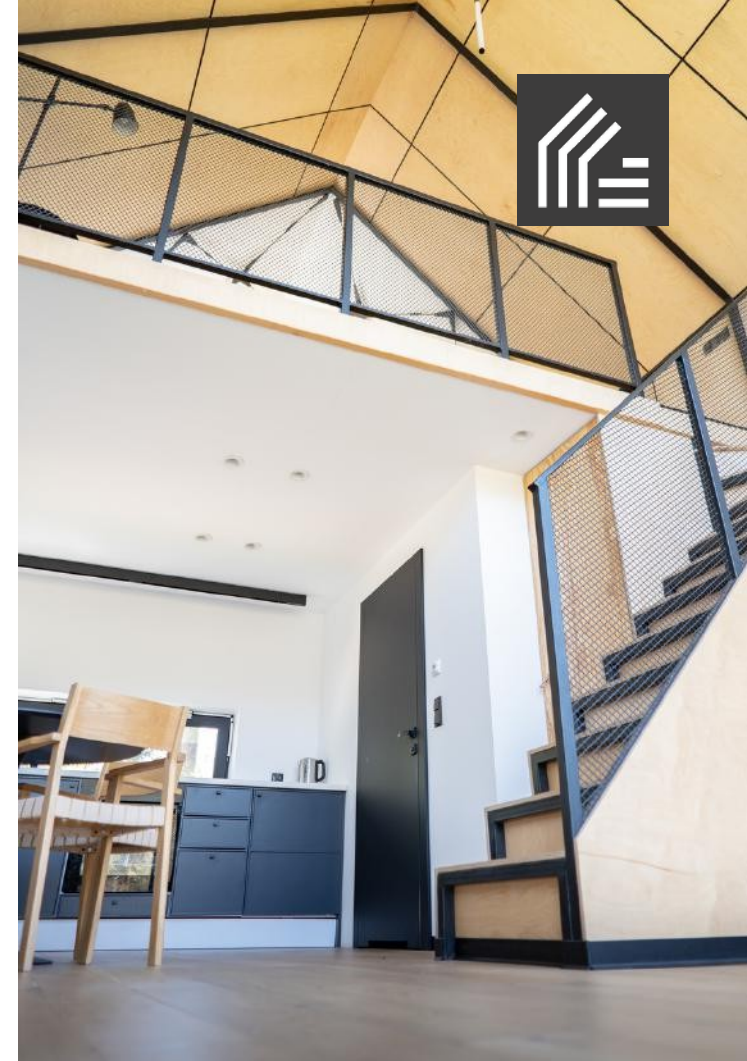
Built-up area 80m²
Floor space MIN 109m² Floor
space MAX 121m²

Individual pricing depending on the layout

5 segments



Built-up area 100m²
Floor space MIN 141m² Floor
space MAX 157m²



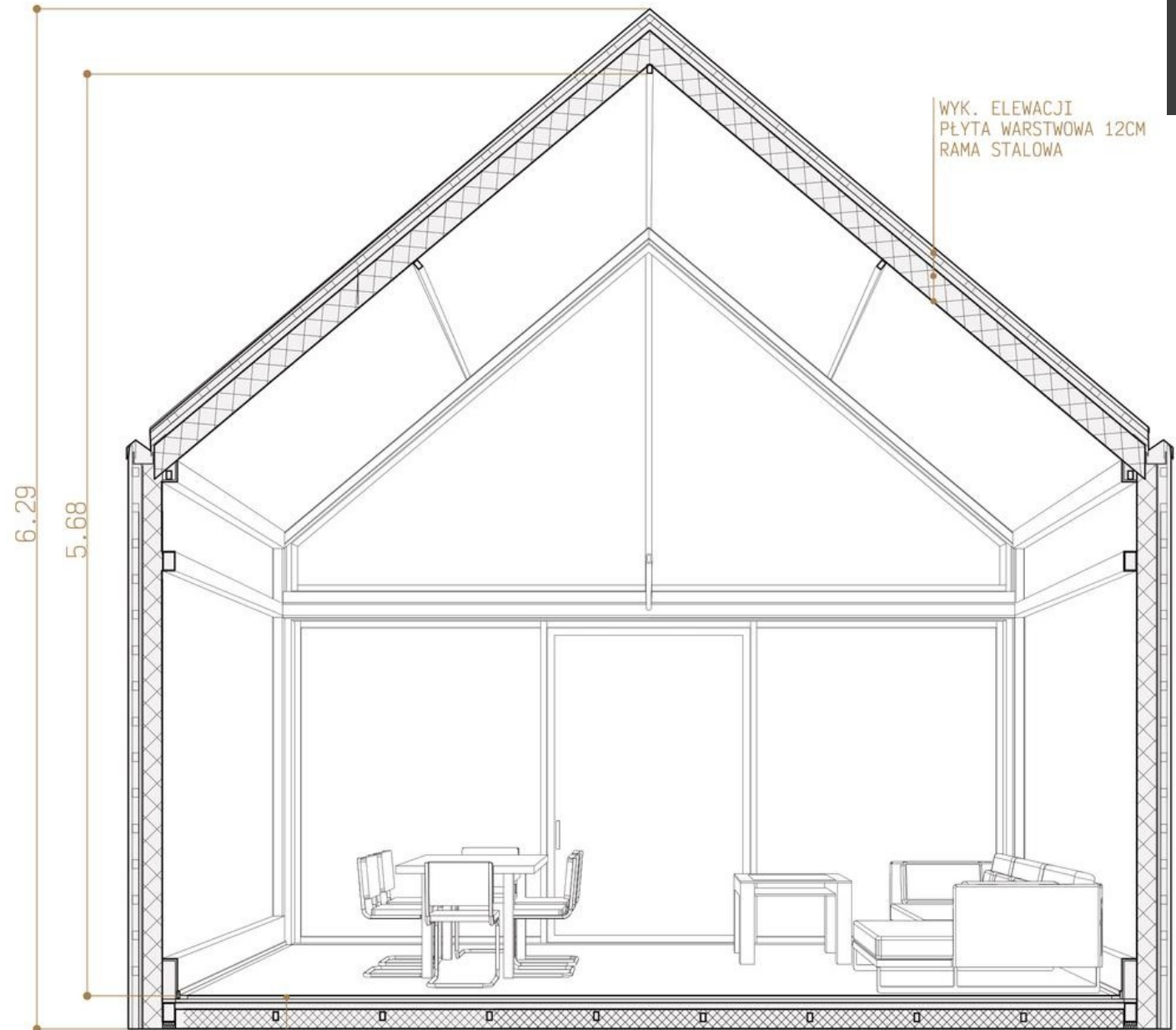
Technical standards of the house



- **CONSTRUCTION:**
 - rigid steel frame protected with anti-corrosion paints,
 - CE certificate,
- **EXTERIOR WALLS:**
 - plasterboard,
 - 50 mm wood wool,
 - 120 mm sandwich panel,
 - standing seam sheet metal
- **ROOF:**
 - plasterboard,
 - 50 mm wood wool,
 - 140 mm sandwich panel,
 - standing seam sheet metal
- **FLOOR:**
 - 22 mm MFP board,
 - 120 mm closed-cell foam,
 - 1 mm galvanized sheet metal
- **INTERIOR WALLS:**
 - drywall system with appropriate structure (Pro Fire+ Hydro, Pro Fire and/or standard),
- **JOINERY:**
 - triple-glazed aluminum,
 - graphite-colored profiles,
 - warm installation
- Acoustic mats at module joints
- **ELECTRICAL INSTALLATION:**
 - concealed
- **ELECTRICAL HEATING INSTALLATION:**
 - for air conditioning with heating function, boilers, bathroom radiator
- **PLUMBING:**
 - fully implemented according to the design



Minimum option
compliant with WT2021

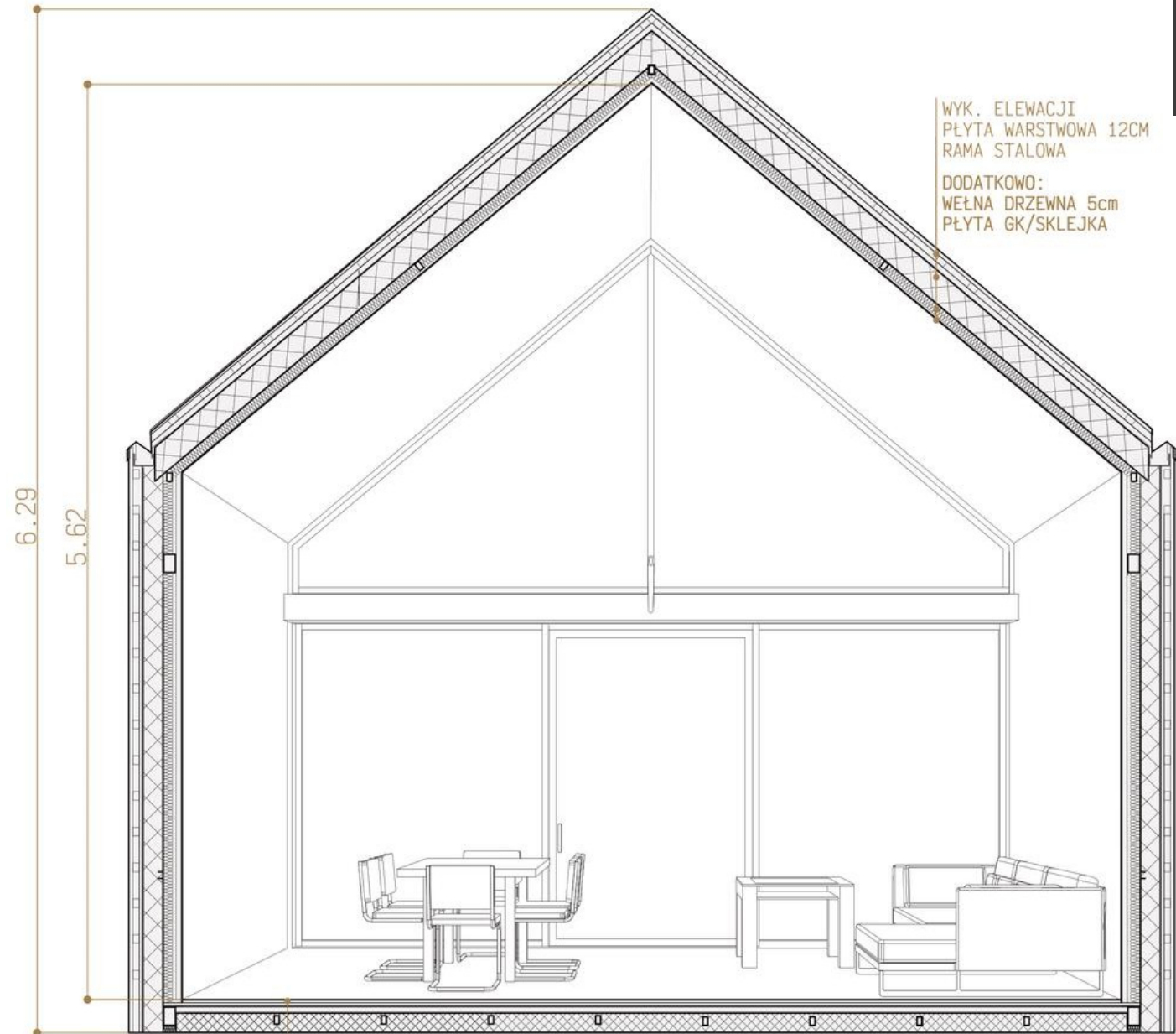


Exposed
loft
steel
frame

WYK. POSADZKI
MFP
FOLIA PAROIZOLACYJNA
RAMA STALOWA Z
PIANA ZAMKNIĘTOKOMÓRKOWA 16CM
BLACHA OCYNK



Classic option
compliant with
WT2021



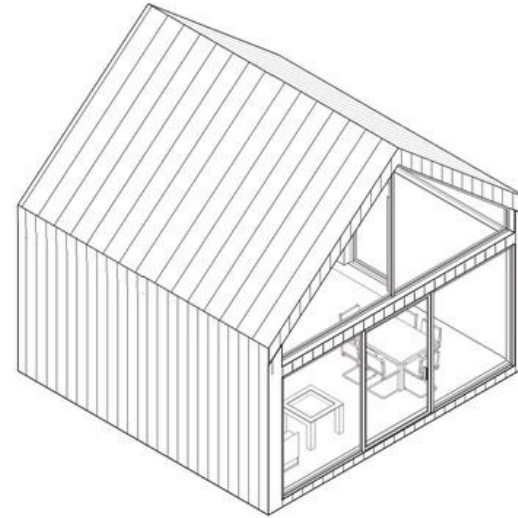
WYK. ELEWACJI
PŁYTA WARSTWOWA 12CM
RAMA STALOWA
DODATKOWO:
WEŁNA DRZEWNA 5cm
PŁYTA GK/SKLEJKA

Concealed steel
frame
built-in panel

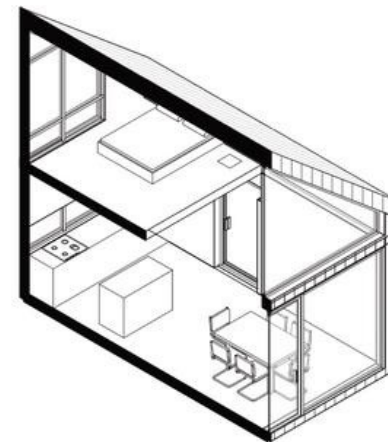
WYK. POSADZKI
MFP
FOLIA PAROIZOLACYJNA
RAMA STALOWA Z
PIANA ZAMKNIĘTOKOMÓRKOWA 16CM
BLACHA OCYNK

2 segments

Internal floor area: from 43m² to 60m²



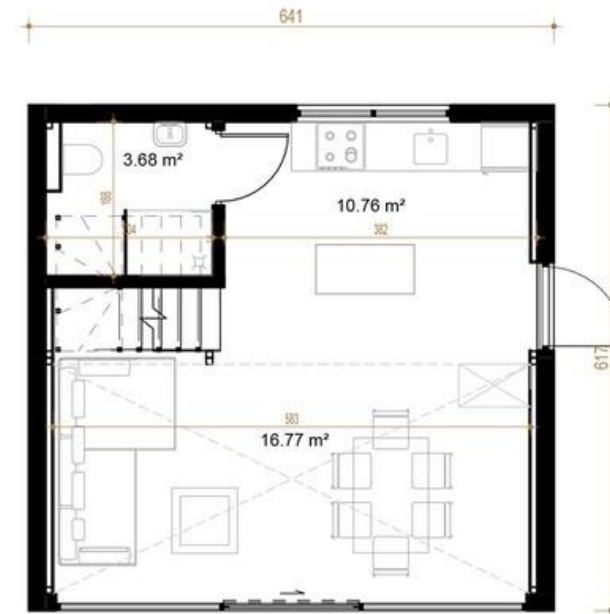
Number of modules: 4
pcs. Width: approx. 6.5
m
Length: approx. 6 m
Height: 6.3 m



2 segments



Internal floor area: from 43m² to 60m²



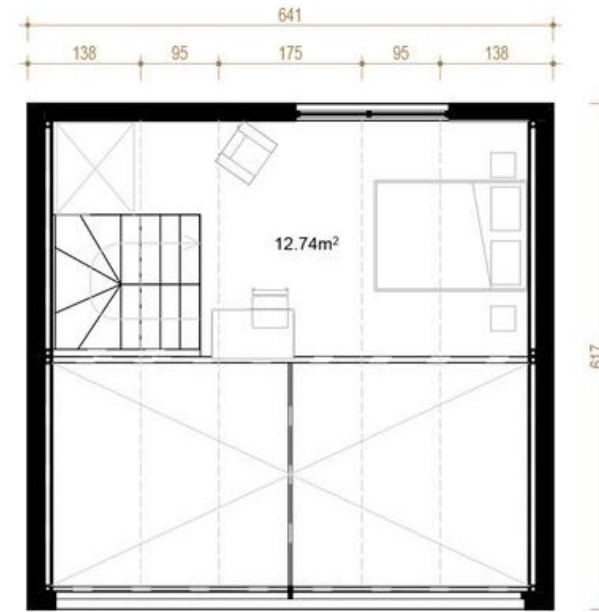
P0

Number of modules: 4
pcs. Width: approx. 6.5
m
Length: approx. 6 m
Height: 6.3 m

2 segments



Internal floor area: from 43m² to 60m²

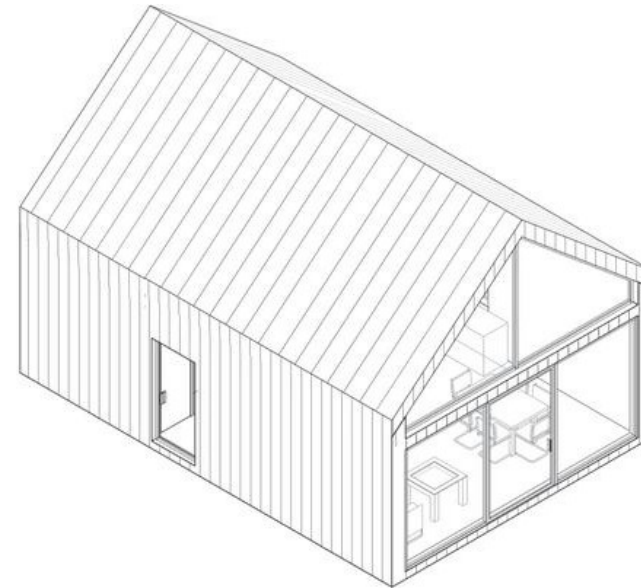


P1

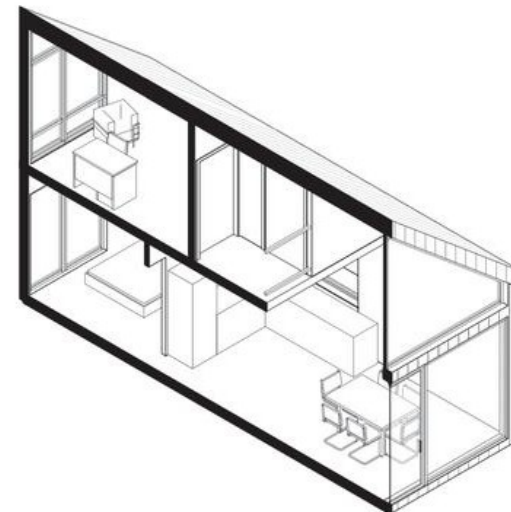
Number of modules: 4
pcs. Width: approx. 6.5
m
Length: approx. 6 m
Height: 6.3 m

3 segments

Internal floor area: from 79m² to 95m²

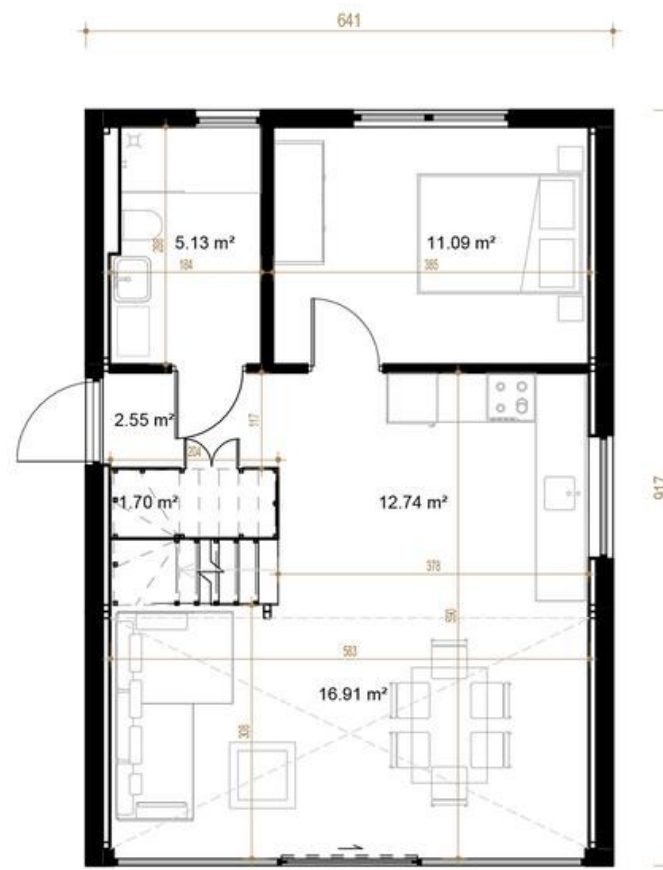


Number of modules: 6
pcs. Width: approx. 6.5
m
Length: approx. 9 m
Height: 6.3 m



3 segments

Internal floor area: from 79m² to 95m²

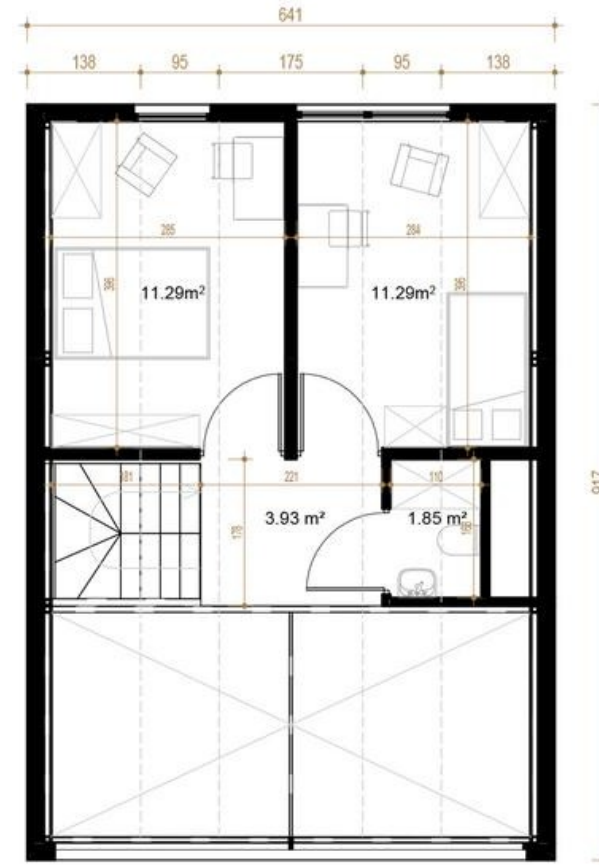


P0

Number of modules: 6
pcs. Width: approx. 6.5
m
Length: approx. 9 m
Height: 6.3 m

3 segments

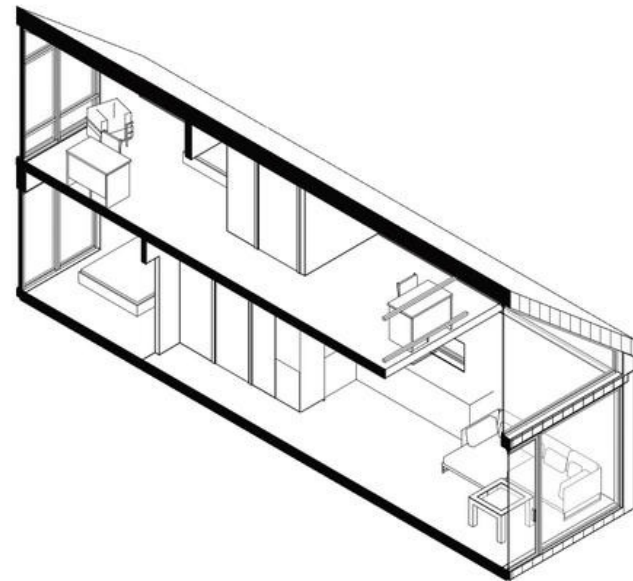
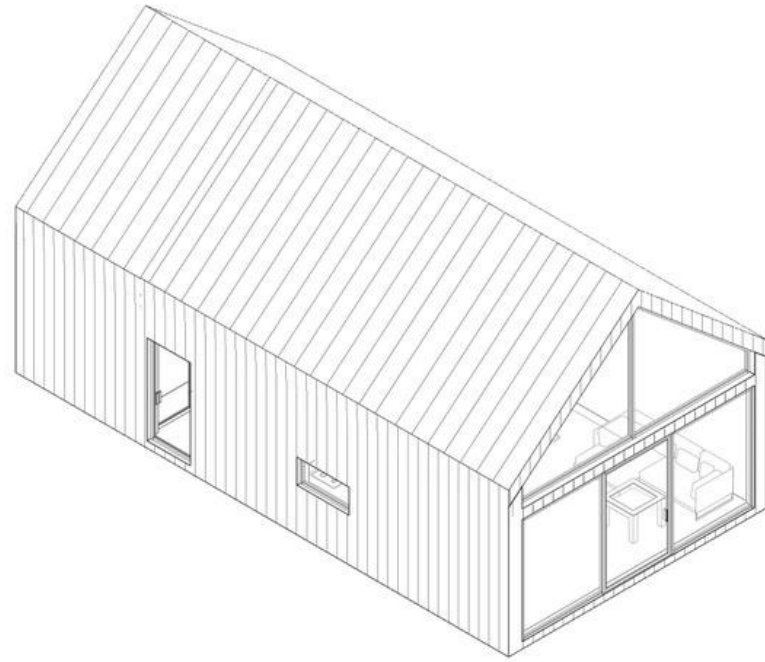
Internal floor area: from 79m² to 95m²



P1

Number of modules: 6
pcs. Width: approx. 6.5
m
Length: approx. 9 m
Height: 6.3 m

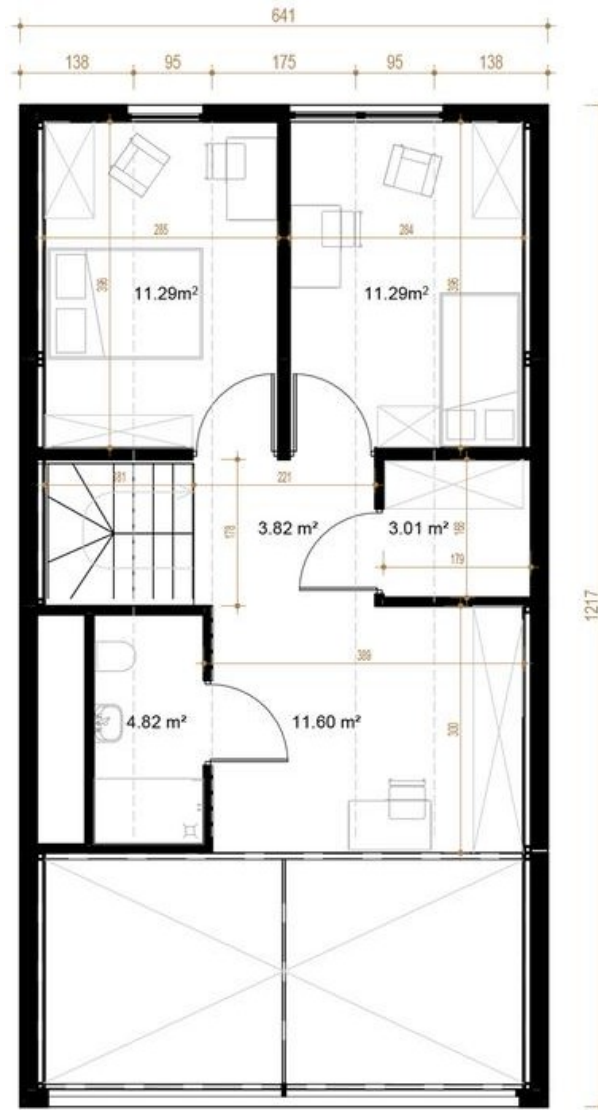
Internal floor area: from 109m² to 121m²



Internal floor area: from 109m² to 121m²



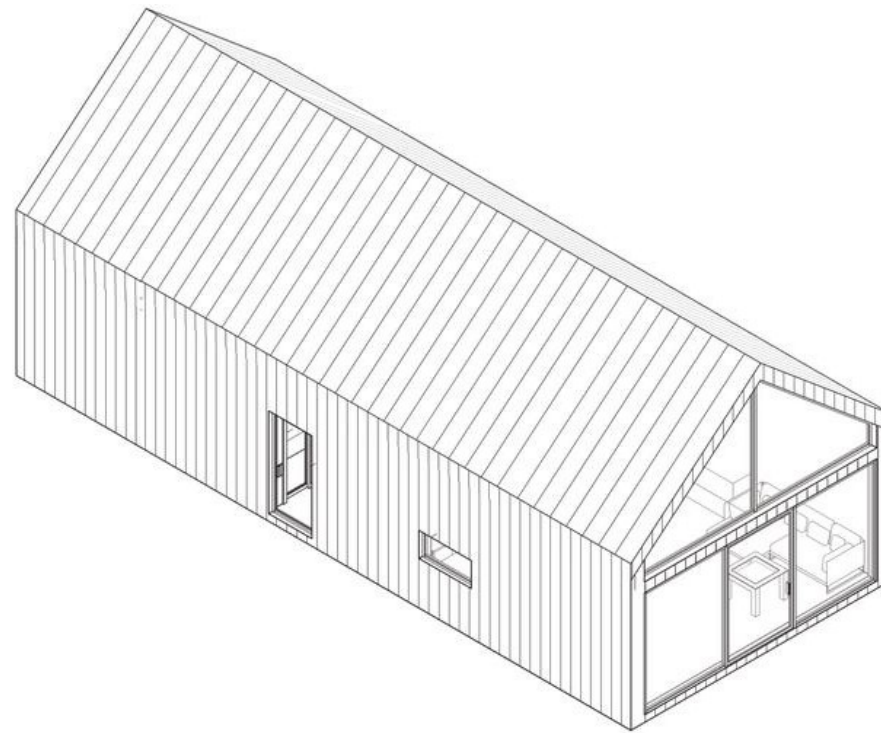
Floor space: from 109m² to 121m²



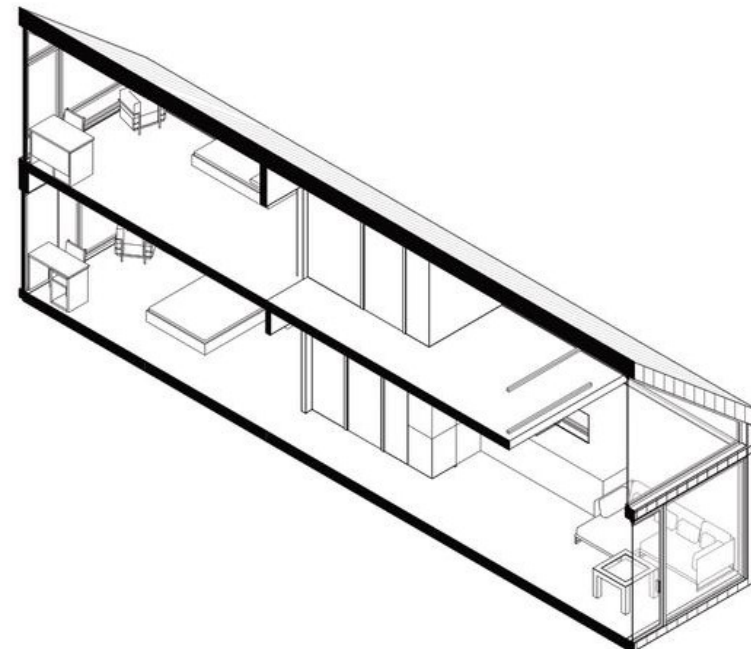
P1

5 segments

Internal floor area: from 141m² to 157m²



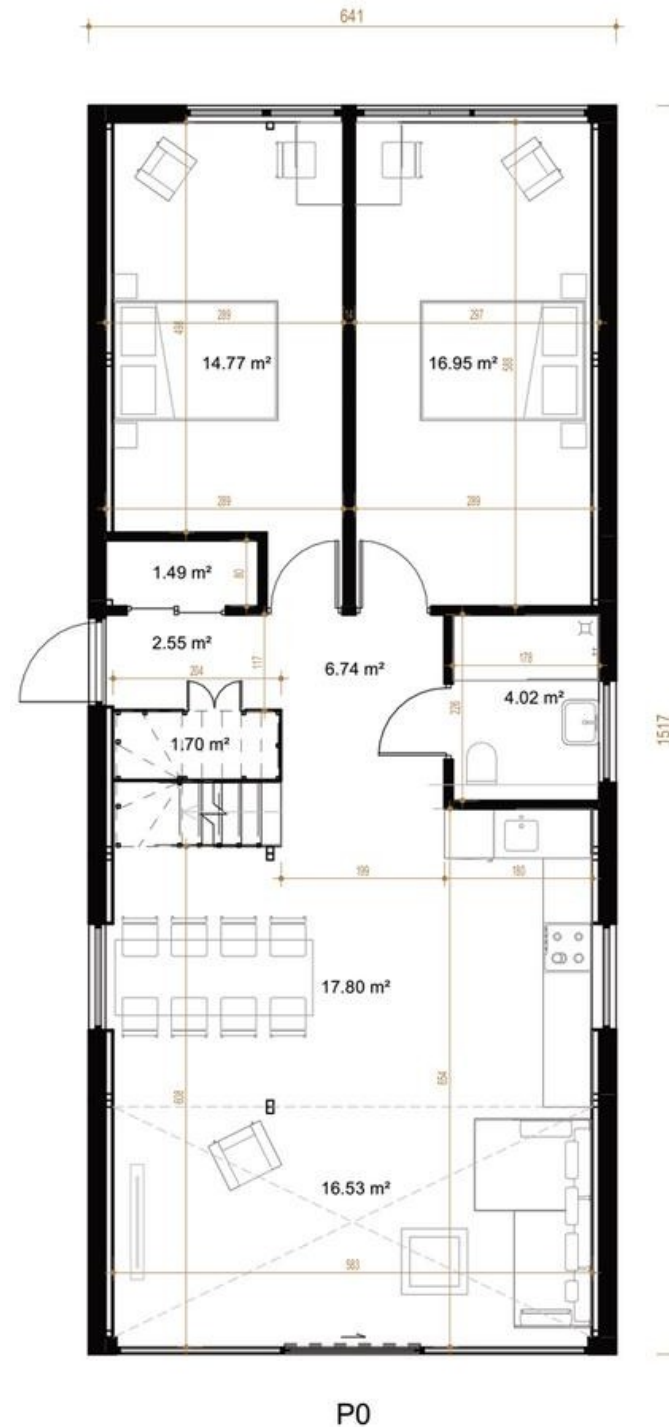
Number of modules: 10
pcs. Width: approx. 6.5
m
Length: approx. 15 m
Height: 6.3 m



5 segments

Internal floor area: from 141m² to 157m²

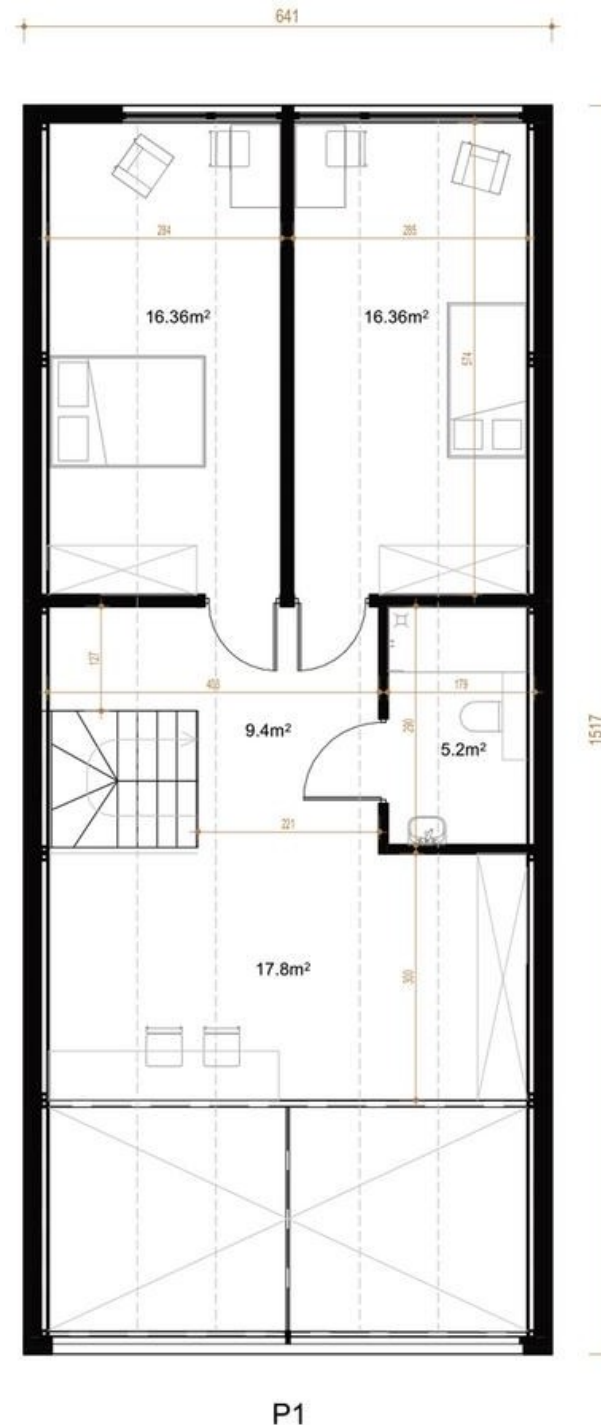
Number of modules: 10
pcs. Width: approx. 6.5
m
Length: approx. 15 m
Height: 6.3 m



5 segments

Floor space: from 141m² to 157m²

Number of modules: 10
pcs. Width: approx. 6.5
m
Length: approx. 15 m
Height: 6.3 m

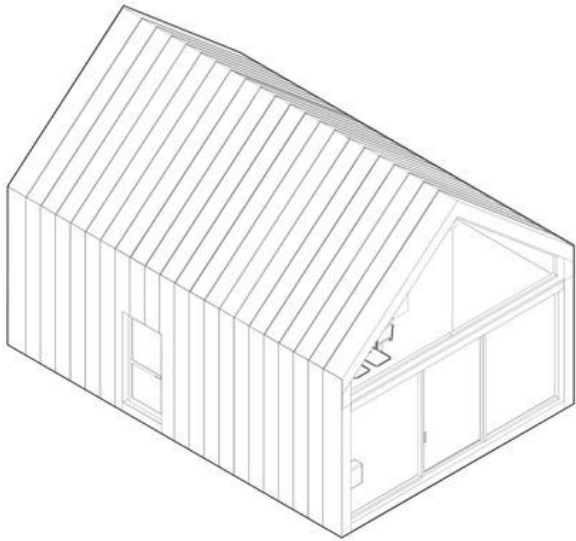




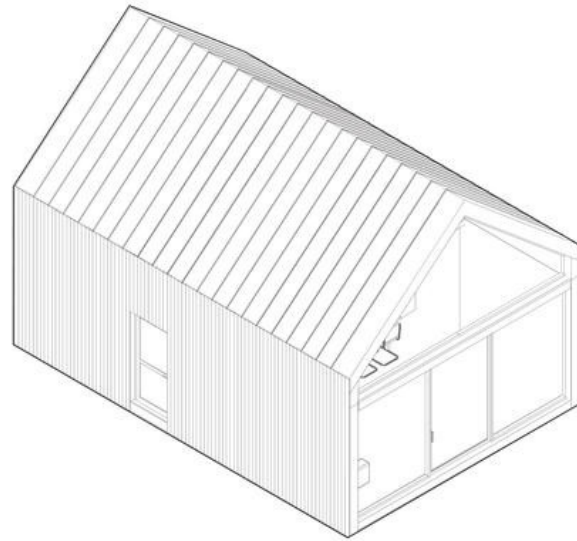
Facade



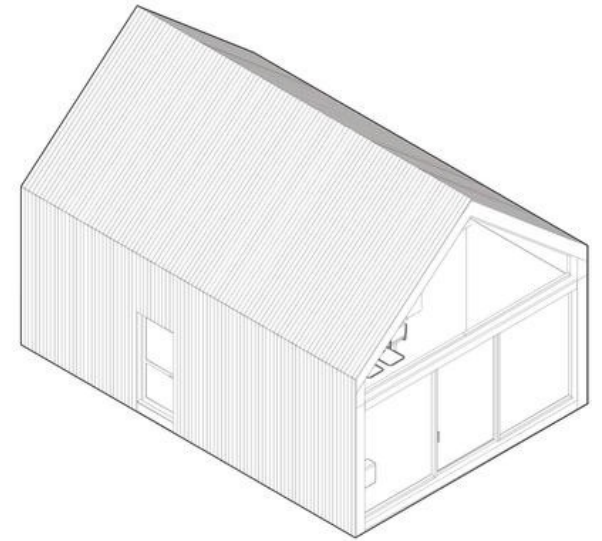
The design includes various types of finishes to suit your needs, style, and surroundings.



Blacha na rąbek

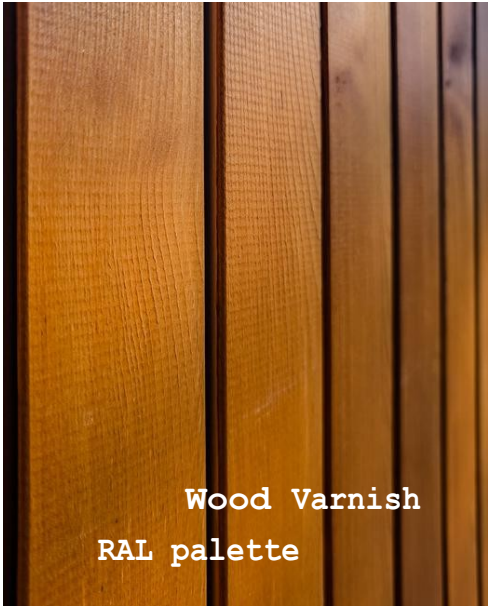
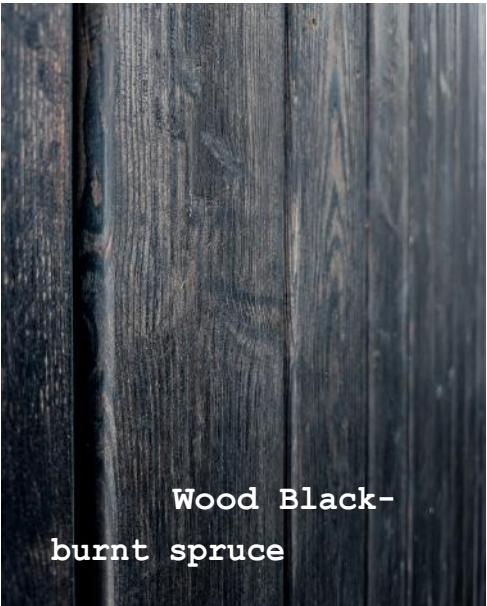
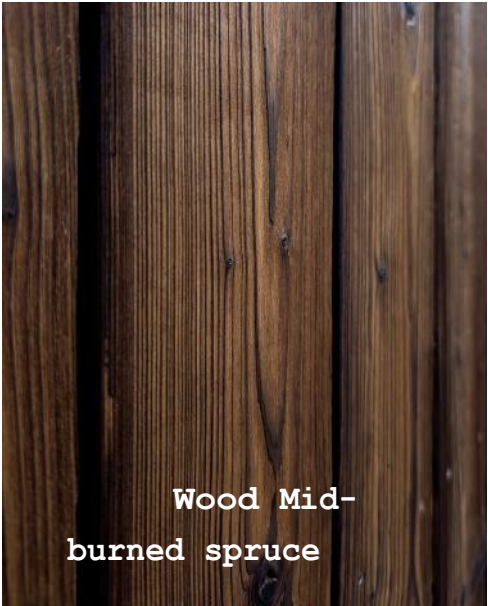
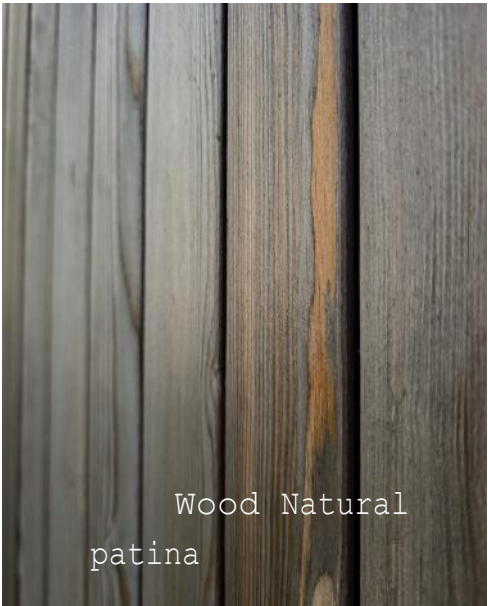


Drewno i blacha na rąbek



Drewniana

Facade - material sample





A house is just the beginning!

TERRACES

from 170 EUR per m²

Take advantage of our experience in building terraces, platforms, decks, and Canadian pools. A seemingly small investment in even a small structure can expand your space and provide additional room for relaxation.

